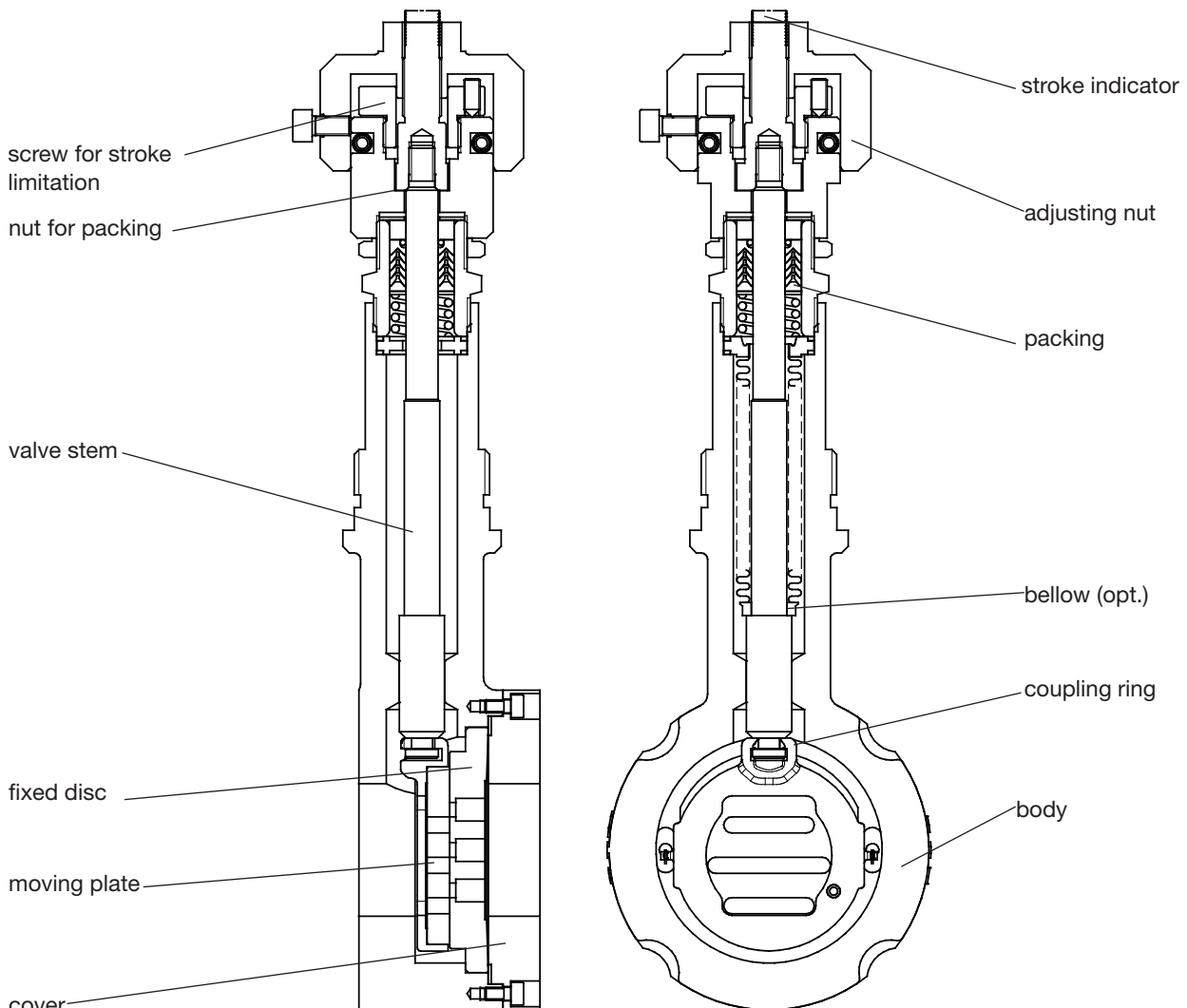


# Adjustable GS orifice 8090

## Series GS3, DN15 to DN125

**Continuously adjustable orifice plate for precise adjustment of a defined flow rate.**

- Infinitely adjustable in the built-in status
- Manual adjustment with safety device
- Optional sealable
- Defined characteristic curve
- Stops at the end positions
- Space-saving intermediate flange construction
- Very light weight
- Insensitive to cavitation



## Technical information

Body design	Flangeless, wafer-type construction more versions see on data-sheet 8050/51-GS1	
Nominal sizes	DN 15 to DN 250	
Nominal pressure acc. DIN 2401	PN 40 (fits also to PN 10-25)	DN 15 - DN 150
	PN 100	DN 15 - DN 80
	PN 16	DN 200 - DN 250
Nominal pressure acc. ANSI	ANSI 150	DN15 - DN 250
	ANSI 300	DN 15 - DN 150
	ANSI 600	DN 15 - DN 80
Media temperature	Versions from -60°C up to +350°C	
Packing leakage	tested according to TA-Luft as defined in DIN EN ISO 15848-1 and VDI 2440	
Ambient temperature	From -60°C to +140°C	

## Application limits

Rating	PN40	PN 16	PN 100	ANSI 150	ANSI 300	ANSI 600
Body material cpl. stainless steel						
Tmin [°C]	-60	-60	-60	-29	-29	-29
Tmax [°C]	350	350	350	350	350	350
Body material cpl. carbon steel						
Tmin [°C]	-60	-60	-10	-20	-20	-10
Tmax [°C]	300	300	300	300	300	300
Body material carbon steel with stainless steel body cover						
Tmin [°C]	-60	-60	-10	-20	-20	-20
Tmax [°C]	350	350	350	350	350	350

## Materials

Body	Stainless steel 1.4408	Carbon steel 1.0619
Bodycover	Stainless steel 1.4404 or 316L	
Packing	PTFE (Carbon filled), spring 1.4310	
Actuating stem	Stainless steel 1.4571, roller burnished	
Bellows	Stainless steel 1.4571	
Fixed disc	Stainless steel 1.4571, coated	STN2-disc
Sliding disc	Special carbon material	STN2-disc
Guide ring for sliding disc	Stainless steel 1.4571	

## Admissible Differential Pressure

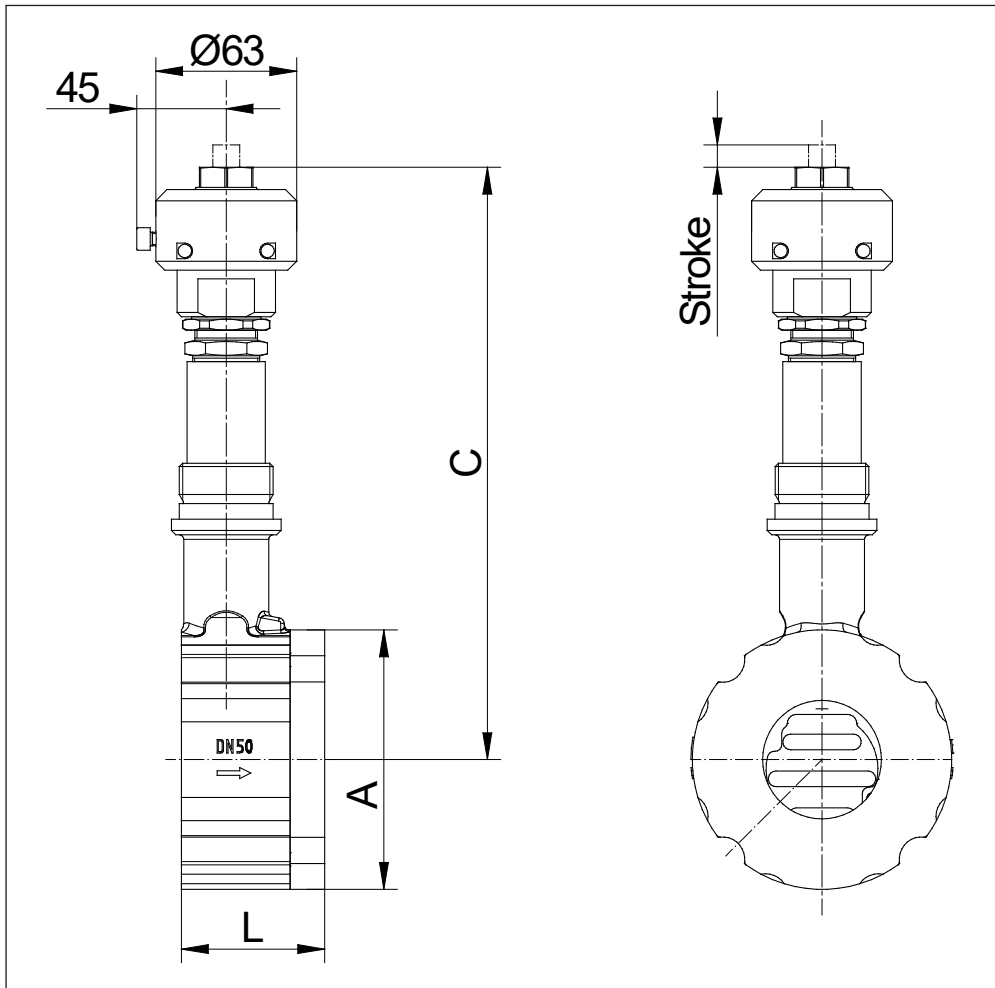
DN	carbon/SFC-stainless steel	STN2
	max. differential pressures	
	bar	bar
15	102,1	102,1
20	102,1	102,1
25	88 (102,1)*	88 (102,1)*
32	102,1	102,1
40	88 (102,1)*	72
50	102,1	77
65	80	62
80	48	36
100	33	33
125	23	22
150	16	16
200	16	9
250	10,5	5,5

\*figures in brackets for bodys made of carbon steel

	Upper limits für admissible pressures in bar					
	PN16	PN40	PN100	ANSI150	ANSI300	ANSI600
P max. carbon steel	16	40	100	19,6	51,1	102,1
P max. stainless steel				19	49,6	99,3



## Dimensions and weight



DN	A	C max	L	Weight kg	Stroke H
15	64	332	56	5,1	5,2
20	72	337	56	5,3	4,7
25	82	342	56	5,6	4,7
32	89	344	56	5,8	4,7
40	99	347	56	6	4,7
50	116	362	64	7,4	6,7
65	138	372	68	8,8	6,7
80	153	377	70	10	6,7
100	184	392	75	12,8	7,2
125	212	407	80	14,6	7,2
150	242	422	80	18,2	6,7
200	302	452	93	33,7	6,7
250	360	479	96	38,2	6,7

dimensions in mm