

Flanged Control Valve 7037

DN 15 up to DN 80, PN 40

Pneumatically operated control valves for neutral through to highly aggressive media.

- Integrated positioner
- Compact design
- All parts contacting the fluid made from stainless steel
- Temperatures up to 200°C
- Working pressure up to 40 bar
- For temperatures from -100°C up to +220°
- Also in pressure released version

Technical Information

Nominal sizes	DN 15 up DN 80
Body material	1.4408
Connection	Flanges acc. DIN EN 1092-1 Flanges acc. ANSI #150
Dimensions	Acc. DIN EN 558-1 row 1 Acc. ANSI/ISA-75.08.01
Nominal pressure	PN 40, ANSI #150
Max. fluid temperature:	
with metal bonnet	-30°C bis +200°C, opt. -100°C bis +220°C
with plastic bonnet	-30°C up to +135°C
with diaphragm actuator	-30°C up to +200°C, opt. -30°C up to +220°C
Ambient temperature**	digital positioner -10°C up to +75°C analog positioner -15°C up to +60°C
Packing leakage	tested according to TA-Luft as defined in DIN EN ISO 15848-1 and VDI 2440 ISO FE BH - CC3 - SSA1 - t (-30°C, +80°C) Test pressure 40 bar
*: Please consider further temperature versions and limits in technical bulletin 32	
**: Please consider the limitation of use of the positioner	



Options

- e. g.:
- Or_{Ex}al position indicator
 - External i/p-converter Type 8045
 - Ex-i/p-Stellungsregler (II 2 G EEx ib IIC T6)
 - inductive limit switches

pneumatical positioner Type 8047
electropneumatical positioner Type 8047
digital positioner Type 8049

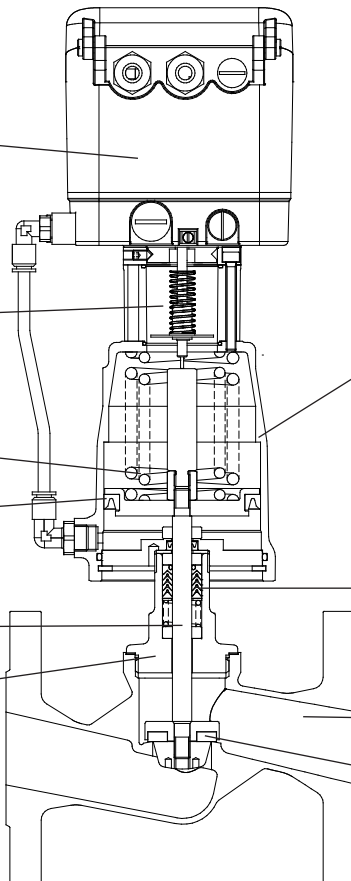
position indicator
PA Trogamid (clear)

springs

exterior lip sealing

valve stem stain-
less steel 1.4571,
roller burnished

head section



bonnet brass plated
(actuator Ø 80 mm)
aluminium, corrosion protected
(actuator Ø 125 mm),
optional plastic
(actuator Ø 80 mm),
stainless steel by request

packing from filled PTFE (car-
bon filled), special version for
reduced hollow spaces
(packing underneath)

body in stainless
steel 1.4408

seating seal PTFE and
other maerials

Flanged Control Valve 7037

standard design with integrated positioner

Materials

Body	Stainless steel 1.4408
Seating seal	PTFE
Bonnet	Brass chrome plated (actuator Ø 80 mm) Aluminium (actuator Ø 125 mm) Bonnet in stainless steel available, if desired
Actuator springs	Edelstahl 1.4310 (Antrieb 80 mm) Spring steel wire C, zinc coated (actuator Ø 125 mm)
Packing	PTFE (carbon filled), spring 1.4310
Valve stem	Stainless steel 1.4571, roller burnished
Position indicator	PA Trogamid (clear)

Positioner

For technical information of our positioners please refer to the corresponding data sheets.

Admissible Differential Pressures

digital positioner

DN	Differential pressure	Supply pressure range	Piston Ø	Springs
	bar			
15	17	4 - 6	80	2 *
20	17	4 - 6	80	2
25	17	4 - 6	80	1
32	10	4 - 6	80	1
32	17	3 - 6	125	2
40	6	4 - 6	80	1
40	17	4 - 6	125	3
40	17	3 - 6	250	6

* special springs

p/p- and i/p-positioner

DN	Differential pressure	Supply pressure range	Piston Ø	Springs
	bar			
15	17	4 - 6	80	2
20	17	4 - 6	80	2
25	12	4 - 6	80	1
32	7	4 - 6	80	1
32	13	3 - 6	125	2
40	4	4 - 6	80	1
40	11	4 - 6	125	3

* special springs

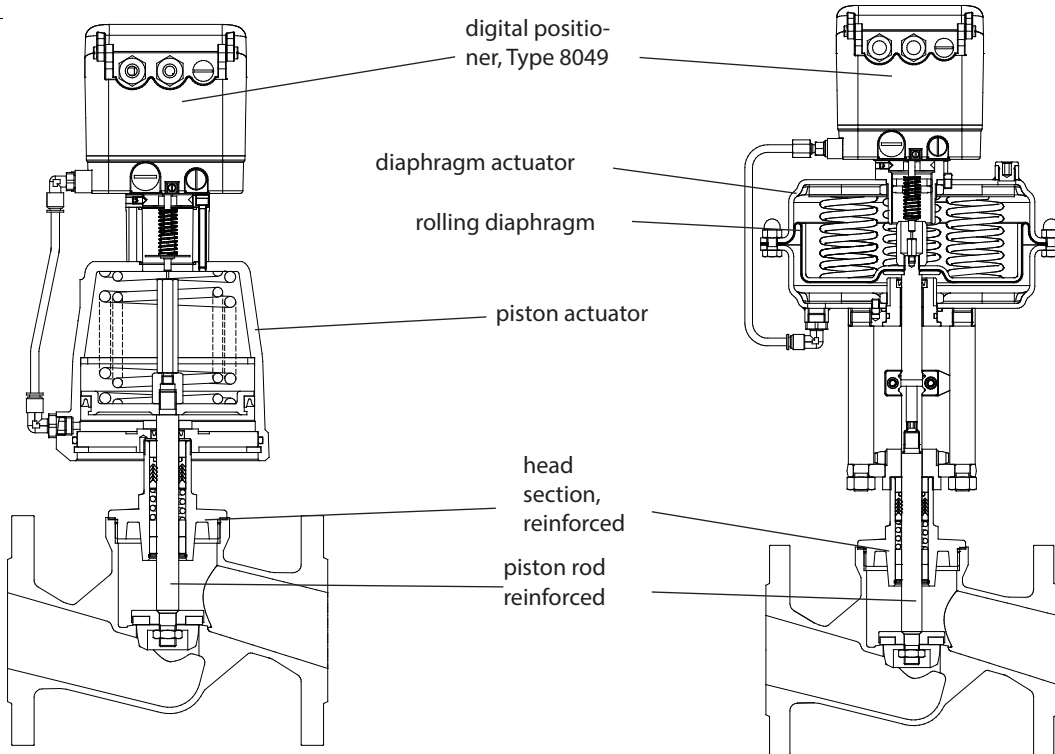
diaphragm actuator, direct pressure range

DN	Differential pressure (bar)		Supply air (bar)		Diaphragm area (mm)
	spring range		spring range		
	0,2 - 1 bar	0,4 - 2 bar	0,2 - 1 bar	0,4 - 2 bar	
15	16	16	1,2	2,4	250
20	16	16	1,2	2,4	250
25	9	16	1,2	2,4	250
32	5	15	1,2	2,4	250
40	3	10	1,2	2,4	250
50	2	6	1,2	2,4	250

Flanged Control Valve 7037

reinforced design with integrated positioner

DN50, PN40



Admissible Differential Pressures

digital positioner

DN	Differential pressure (bar)		Supply pressure range bar	Piston Ø mm	Springs number
	PTFE	PEEK			
50	3	-	4-6	80	1
50	9	3	4-6	125	3
50	12	5	3-6	250	6
50	16	10	4-6	250	8*
50	16	16	4-6	250	12
65	6	5	4-6	125	3
65	13	12	4-6	250	12
80	4	3	4-6	125	3
80	9	8	4-6	250	12

p/p- and i/p-positioner

DN	Differential pressure (bar)		Supply pressure range bar	Piston Ø mm	Springs number
	PTFE	bar			
50	2	4-6	80	1	
50	6	4-6	125	3	
50	12	4-6	250	10	
50	16	4-6	250	12*	
65	2,5	4-6	125	3	
65	9	4-6	250	12	
80	2,5	4-6	125	3	
80	6	4-6	250	12	

*Standardspringconfiguration

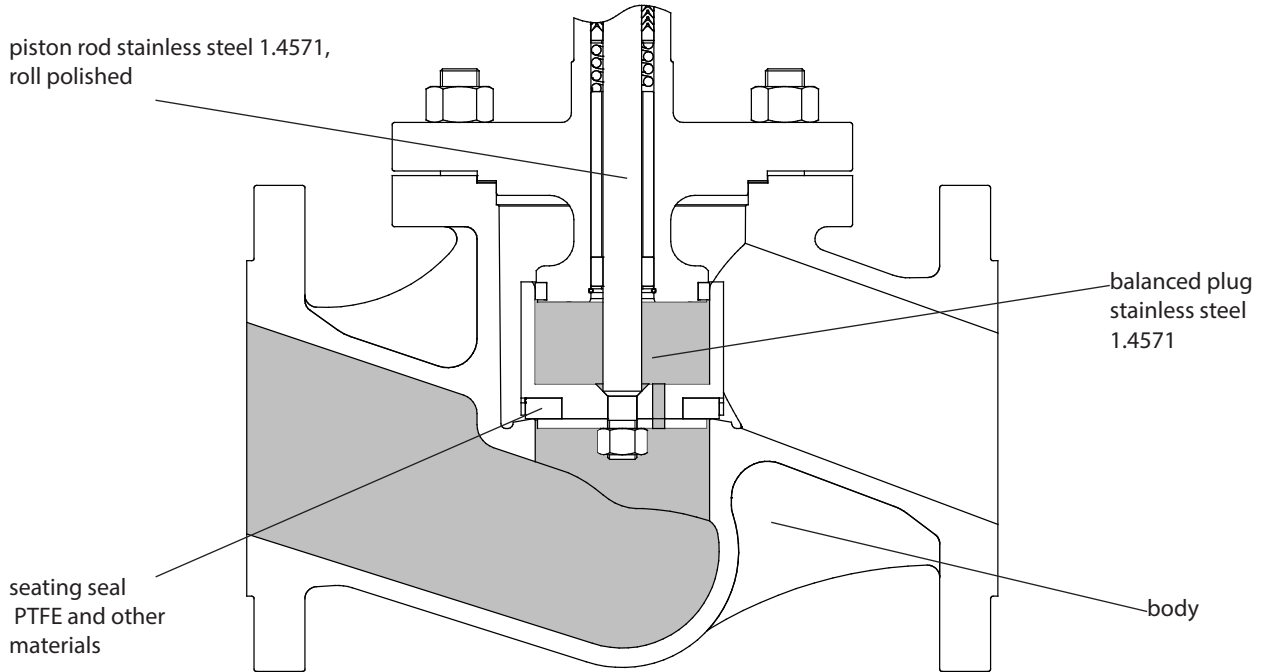
Kvs-Values (valid for standard and reinforced design)

DN	linear								equal percentage							
	15	20	25	32	40	50	65	80	15	20	25	32	40	50	65	80
100 %	3,2	5,8	10,8	16	22	33,5	43	60	3	5,4	10	15,5	20	28	38	50
63 %	-	3,5	-	10	13,2	20,1	27	-	-	3,3	-	9,3	12	18	24	-
40 %	1,3	2,3	4,3	6,4	8,8	13,4	-	-	1,3	2,2	4	6,2	8	-	-	-
25 %	0,8	-	2,7	-	-	-	-	-	0,8	-	2,7	-	-	-	-	-

Flanged Control Valve 7037

pressure related design with integrated positioner

Admissible Differential Pressures



digital positioner

DN	Differential pressure (bar)		Supply pressure range bar	Piston Ø mm	Springs number
	PTFE	PEEK			
65	16	16	4 - 6	125	3
65	16	16	1,5 - 6	250	4
80	16	16	4 - 6	125	3
80	16	16	1,5 - 6	250	4

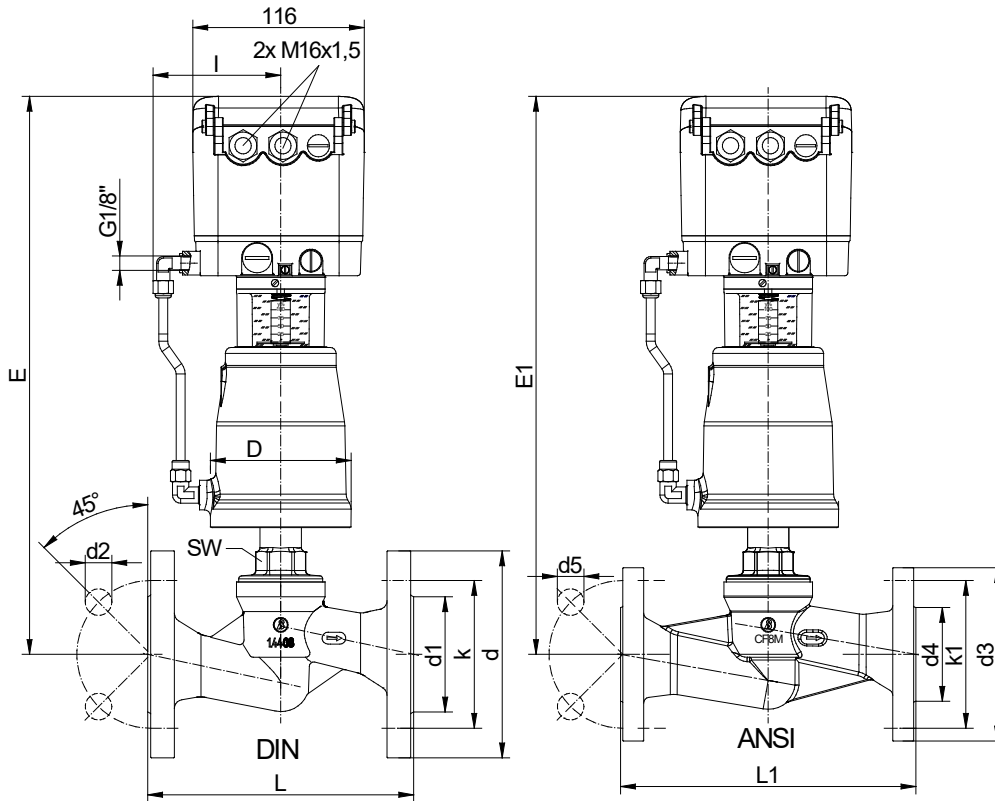
p/p- and i/p-positioner

DN	Differential pressure (bar)		Supply pressure range bar	Piston Ø mm	Springs number
	PTFE	PEEK			
65	16	16	4 - 6	125	3
80	16	16	4 - 6	125	3

Flanged Control Valve 7037

piston actuator with integrated positioner

Dimensions and Weights DN15 up to DN40



7037 with digital positioner Type 8049

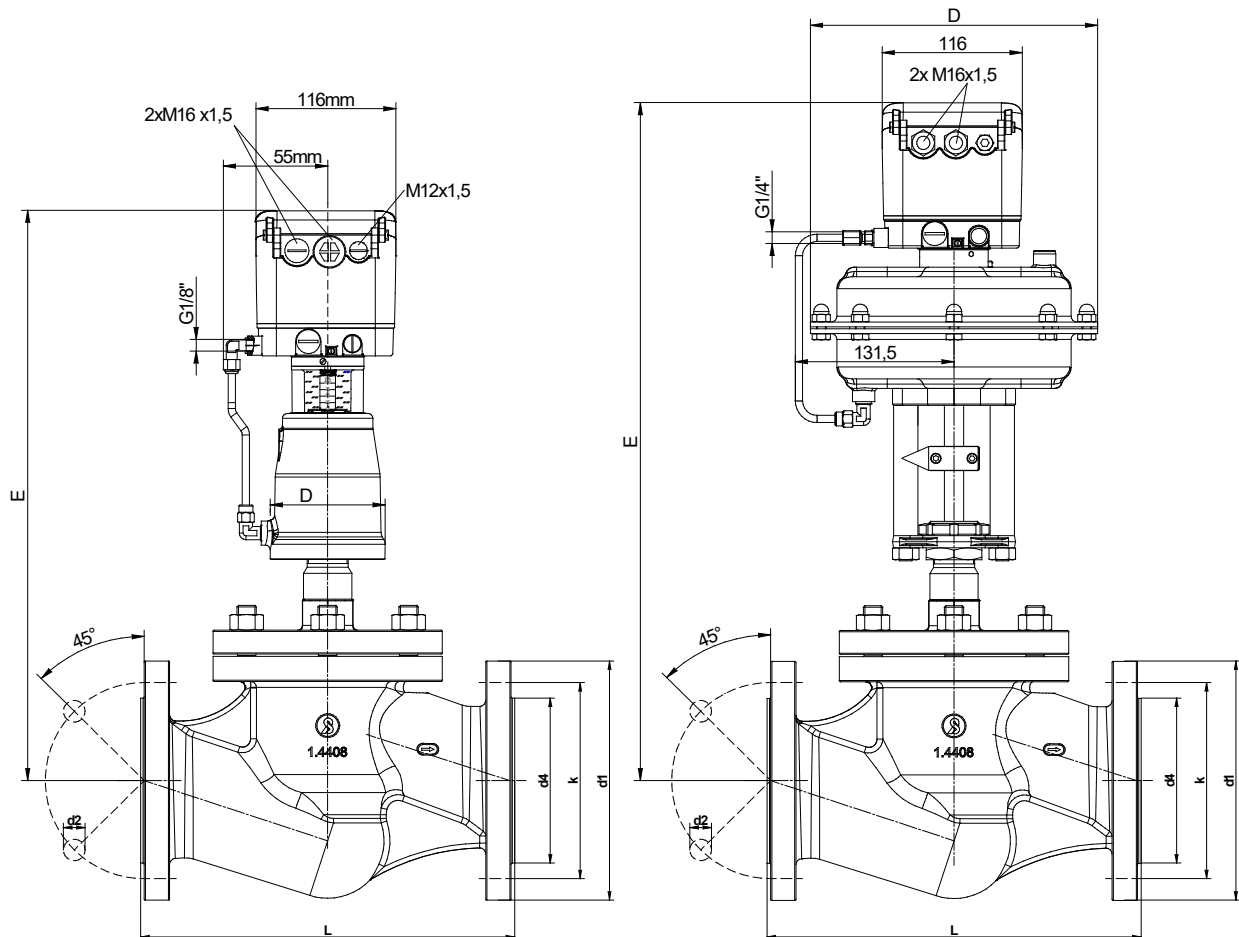
DN	Actuator	L	L1	D	d	d1	d2	d3	d4	d5	k	k1	E	E1	G	I	SW
15	80	130	184	98	95	45	14	88,9	35,1	15,7	65	60,5	353	353	1/4"	55	30
20	80	150	184	98	105	58	14	98,6	42,9	15,7	75	69,9	357	357	1/4"	55	30
25	80	160	184	98	115	68	14	108	50,8	15,7	85	79,2	374	375	1/4"	55	30
32	80	180	200	98	140	78	18	117	63,5	15,7	100	88,9	379	379	1/4"	55	30
32	125	180	200	144	140	78	18	117	63,5	15,7	100	88,9	399	399	1/4"	55	30
40	80	200	222	98	150	88	18	127	73,2	15,7	110	98,6	384	384	1/4"	55	30
40	125	200	222	144	150	88	18	127	73,2	15,7	110	98,6	405	405	1/4"	55	30

Dimensions in mm

Flanged Control Valve 7037

piston actuator with integrated positioner

Dimensions and Weights DN60 and DN80



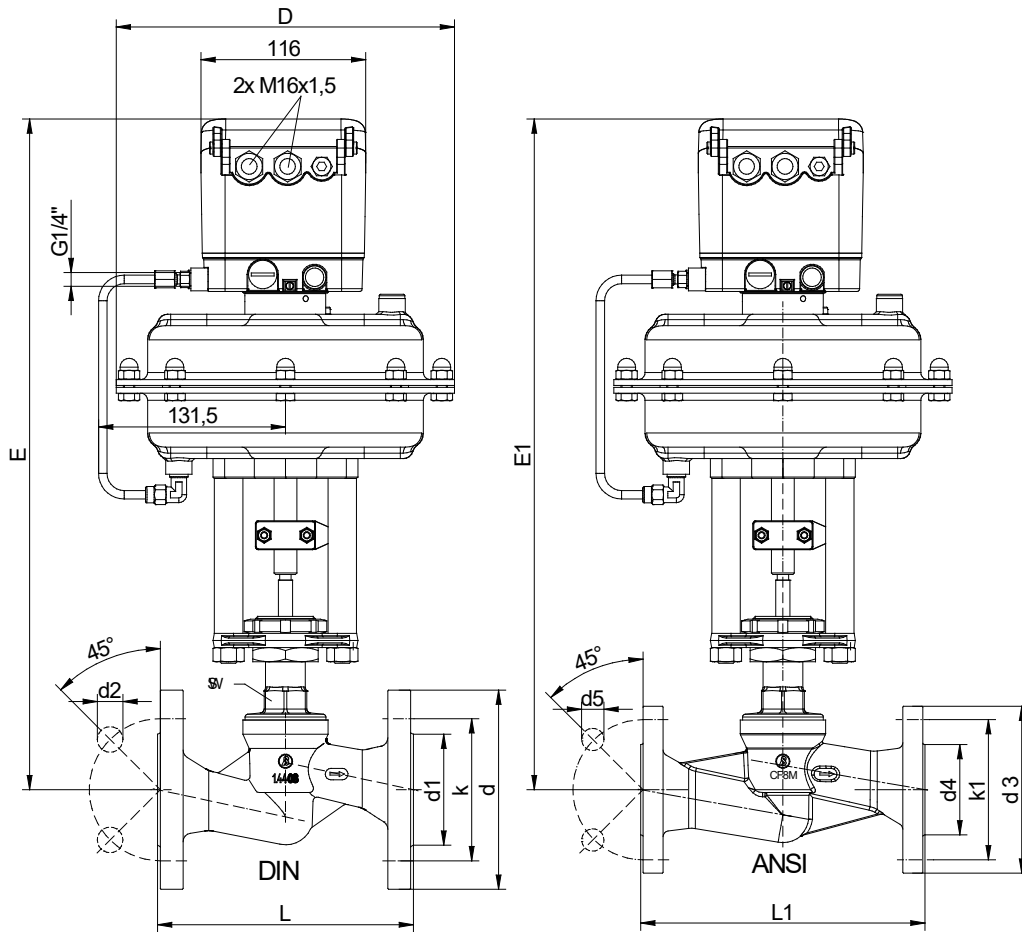
DN	Actuator	L	D	d1	d2	d4	k	E	G
65	80	290	96	185	18	122	145	467	G1/4"
65	125	290	146	185	18	122	145	492	G1/4"
65	250	290	238	185	18	122	145	557	G1/4"
80	80	310	96	200	18	138	160	477	G1/4"
80	125	310	146	200	18	138	160	502	G1/4"
80	250	310	238	200	18	138	160	568	G1/4"

Dimensions in mm

Flanged Control Valve 7037

diaphragm actuator with integrated positioner

Dimensions and Weights DN 15 up to DN80



7037 with digital positioner Type 8049

DN	Actuator	L	L1	D	d	d1	d2	d3	d4	d5	k	k1	E	E1	G	SW
15	250	130	184	238	95	45	14	88,9	35,1	15,7	65	60,5	446,1	447,1	1/4"	30
20	250	150	184	238	105	58	14	98,6	42,9	15,7	75	69,9	450,6	450,6	1/4"	30
25	250	160	184	238	115	68	14	108	50,8	15,7	85	79,2	467,6	467,7	1/4"	30
32	250	180	200	238	140	78	18	117,3	63,5	15,7	100	88,9	471,7	471,5	1/4"	30
40	250	200	222	238	150	88	18	127	73,2	15,7	110	98,6	477,6	477,6	1/4"	36
50*	250	230	254	238	165	102	18	152,4	91,9	19,1	125	120,7	508,3	501,4	1/4"	36
65*	250	290	-	238	185	122	18	-	-	-	145	-	556	-	1/4"	37
80*	250	310	-	238	200	138	18	-	-	-	160	-	568	-	1/4"	38

* reinforced version

Dimensions in mm

Text and pictures are not binding. We reserve the right to alter the equipment.