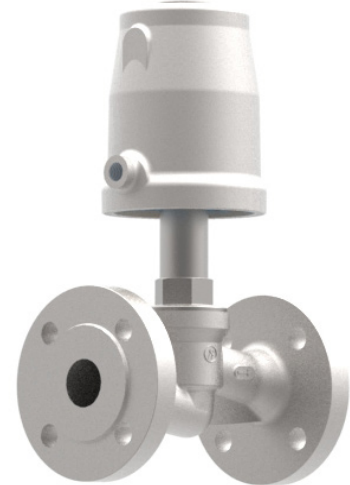


Flanged Valve HT220 7032

DN 15 up to DN 50

Pneumatically operated angle seat valves for the control of fluids of up to 220°C.

- Compact design
- Unaffected by lightly contaminated media
- For temperatures up to +220°C
- Working pressures up to 40 bar
- Versatile actuators
- Preferred usage: steam applications



Technical Information

Nominal sizes	DN 15 up to DN 50
Body material	1.4408 and 1.4436 (CF8M)
Connection	Flanges acc. DIN EN 1092-1
	Flanges acc. ANSI #150
Dimensions	acc. DIN EN 558-1 Row 1
	acc. ANSI/ISA-75.08.01
Nominal pressure	PN 40, ANSI #150
Max. fluid temperature*	0°C up to +220°C
Seating seal	PEEK-7 (T<160°C)
	PEEK-8 (T>160°C)
Ambient temperature*	-15°C up to +60°C
Viscosity of media	maximum 600 mm ² /s (600cSt, 80°E)
working pressure	See tables and diagrams, limitation for dangerous gases acc. Pressure equipment directive 97/23/EG (category I): PS x DN < 1000
Packing leakage	tested according to TA-Luft as defined in DIN EN ISO 15848-1 and VDI 2440

*: Please consider further temperature versions and limits in technical bulletin 32

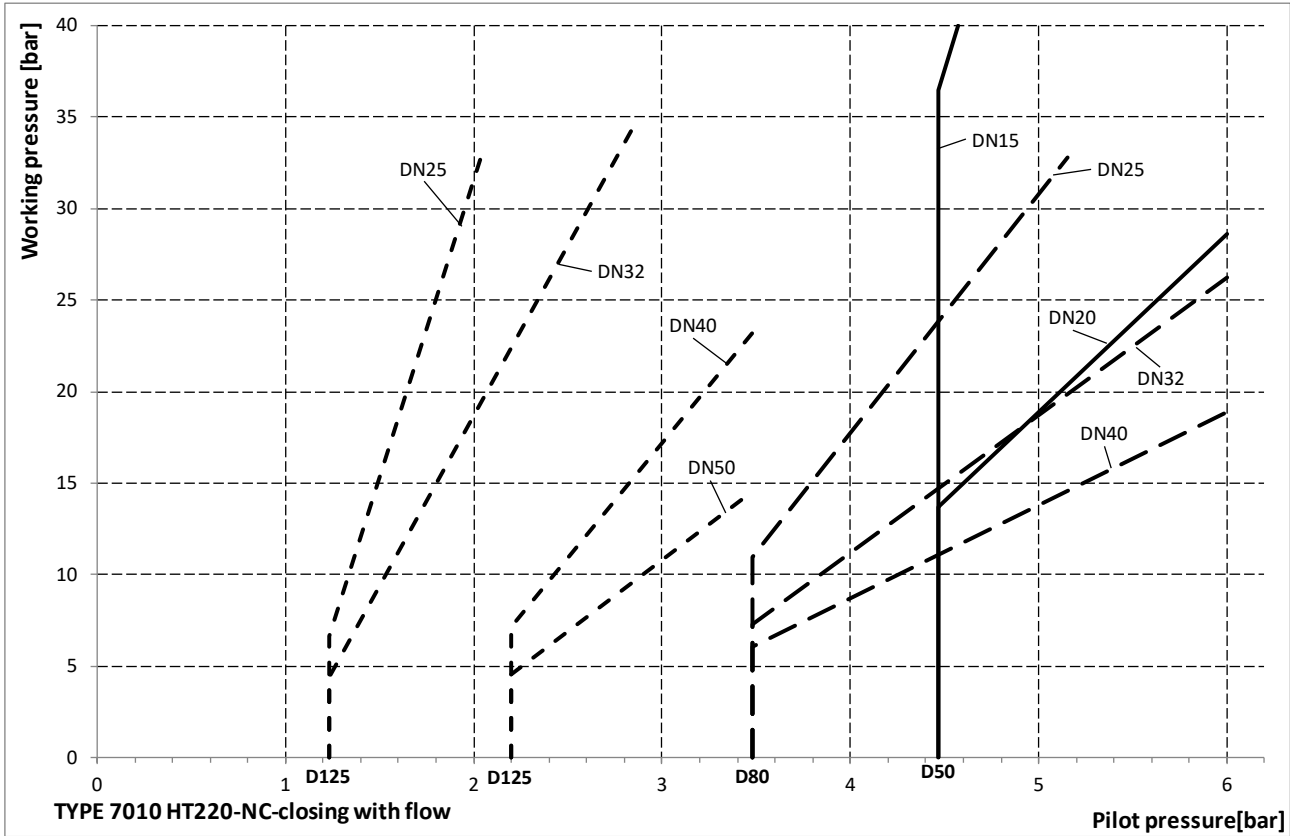
Options

e.g.:

- Limit switches
 - inductive proximity switches
 - electrical contact switches
- Solenoid valves
- Additional manual operation

Angle seat valves NC, closing with flow. Preferred usages are gaseous media, with liquids closure strokes may occur.

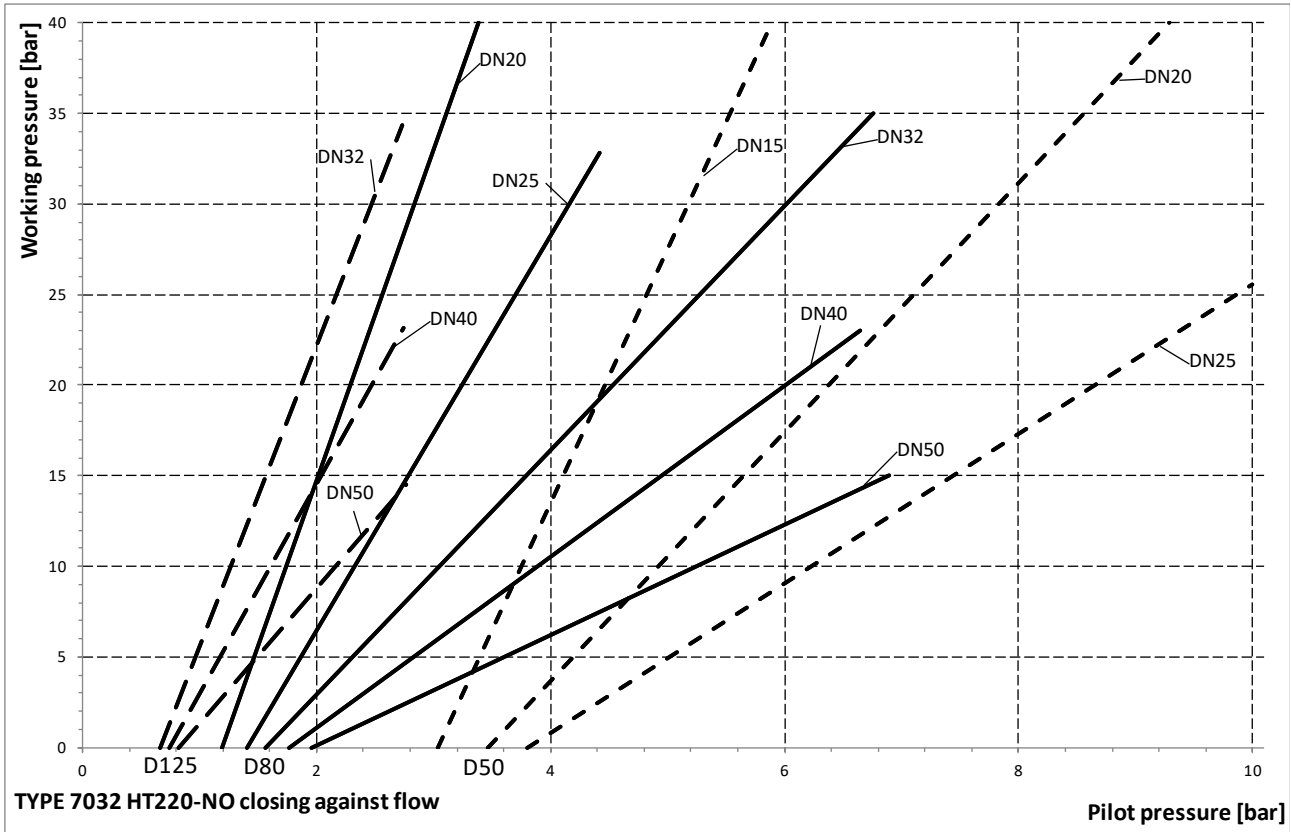
Seating seal PEEK-7 (T<160°C) and PEEK-8 (T>160°C).



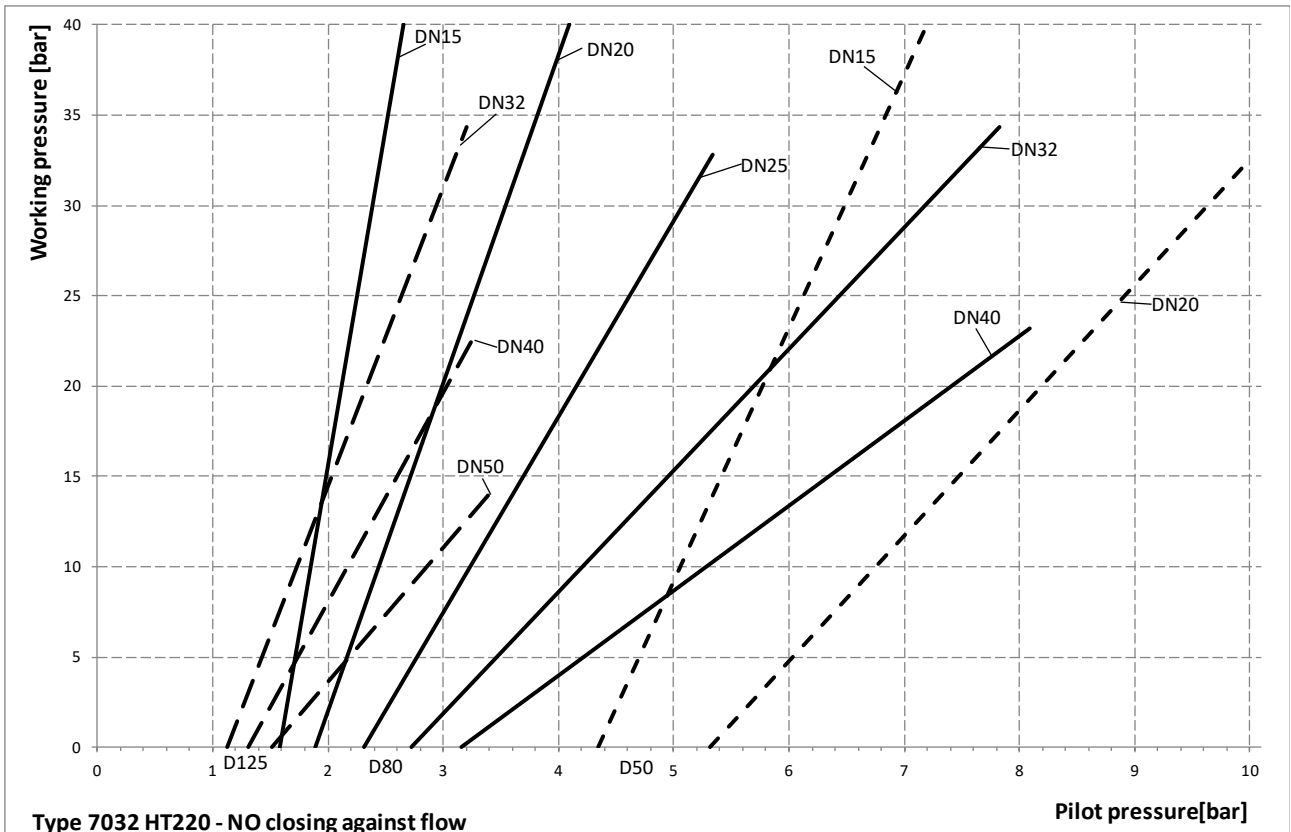
Spring set for version „closing with flow“:

- actuator D50: 2 springs
- actuator D80: 1 strong spring
- actuator D125: DN25-32 1 strong spring
- actuator D125: DN40-50 2 strong springs

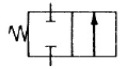
Angled seat valve NO, closing against flow. Seating seal PEEK-8 (T>160°C).



Angled seat valve NO, closing against flow. Seating seal PEEK-7 (T<160°C).



Flanged Valve HT220 7032



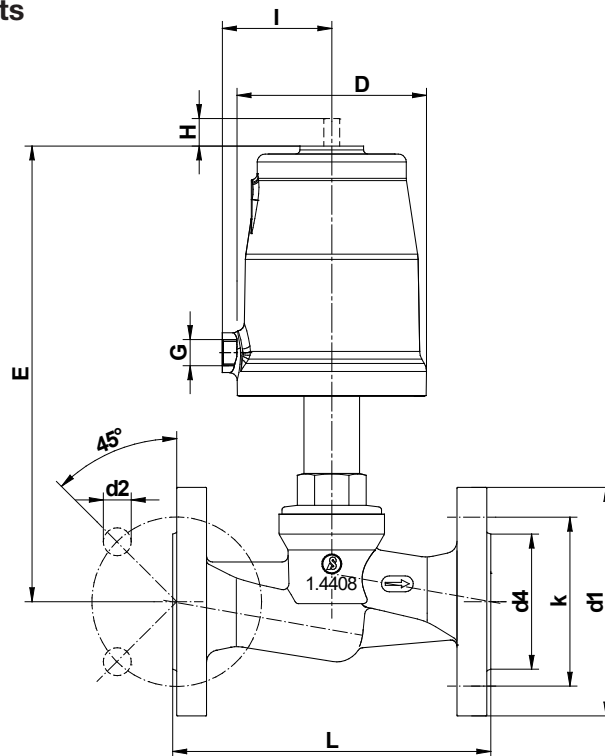
Angle seat valves, NC, closing against flow. Usage for fluid and gaseous media.

DN	Max. working pressure (differential pressure) bar		Pilot pressure bar	Actuator Ø mm	Springs
	PEEK-7 (T<160°C)	PEEK-8 (T>160°C)			
15	-	11	3,5-10	D50	1
15	4,9	23	4,5-10	D50	2
15	17	35	5,7-10	D50	3
20	-	7,4	4,5-10	D50	2
20	-	13	5,7-10	D50	3
20	22	35	3,5-10	D80	1
20	35	40	4,4-10	D80	2
25	8,4	18	3,5-10	D80	1
25	15	25	4,4-10	D80	2
25	24	32	5,6-10	D80	3
32	-	9,7	3,5-10	D80	1
32	6,3	14	4,4-10	D80	2
32	11	19	5,6-10	D80	3
32	-	8,4	1,3-10	D125	1
32	13	20	2,2-10	D125	2
32	22	30	3,1-10	D125	3
40	-	8	4,4-10	D80	2
40	4,3	10	5,6-10	D80	3
40	6,1	12	2,2-10	D125	2
40	11	18	3,1-10	D125	3
Reinforced design					
40	17	23	2,2 - 6	D250	6
50	-	6,4	5,6 - 10	D80	3
50	-	7,6	2,2 - 10	D125	2
50	5,9	11	3,1 - 10	D125	3
50	9,5	14	2,2 - 6	D250	6
50	13	18	2,7 - 6	D250	8

Flanged Valve HT220 7032

with piston actuator

Dimensions and Weights



DIN-flange

DN	Actuator	L	D	d	d1	d2	k	E	G	Stroke	I	Kvs-Value	Weight (kg)
15	50	130	62	95	45	14	65	169	1/8"	12	34,5	3,1	3,2
20	50	150	62	105	58	14	75	174	1/8"	15,5	34,5	6,5	4
25	50	160	62	115	68	14	85	191	1/8"	15,5	34,5	12	4,6
25	80	160	98	115	68	14	85	228	1/4"	20	55	12	6,2
32	50	180	62	140	78	18	100	195	1/8"	15,5	34,5	17	6,2
32	80	180	98	140	78	18	100	232	1/4"	23	55	17,5	7,7
32	125	180	144	140	78	18	100	258	1/4"	23	80	17,5	9,9
40	50	200	62	150	88	18	110	201	1/8"	15,5	34,5	25	7,3
40	80	200	98	150	88	18	110	239	1/4"	28,5	55	25	8,8
40	125	200	144	150	88	18	110	264	1/4"	28,5	80	25	11
Reinforced design													
40	50	200	62	150	88	18	110	216	1/8"	15,5	34,5	25	7,4
40	80	200	98	150	88	18	110	254	1/4"	28,5	55	25	8,9
40	125	200	144	150	88	18	110	279	1/4"	28,5	80	25	11,1
50	80	230	98	165	102	18	125	278	1/4"	30	55	40	10,9
50	125	230	144	165	102	18	125	303	1/4"	30	80	40	13,1

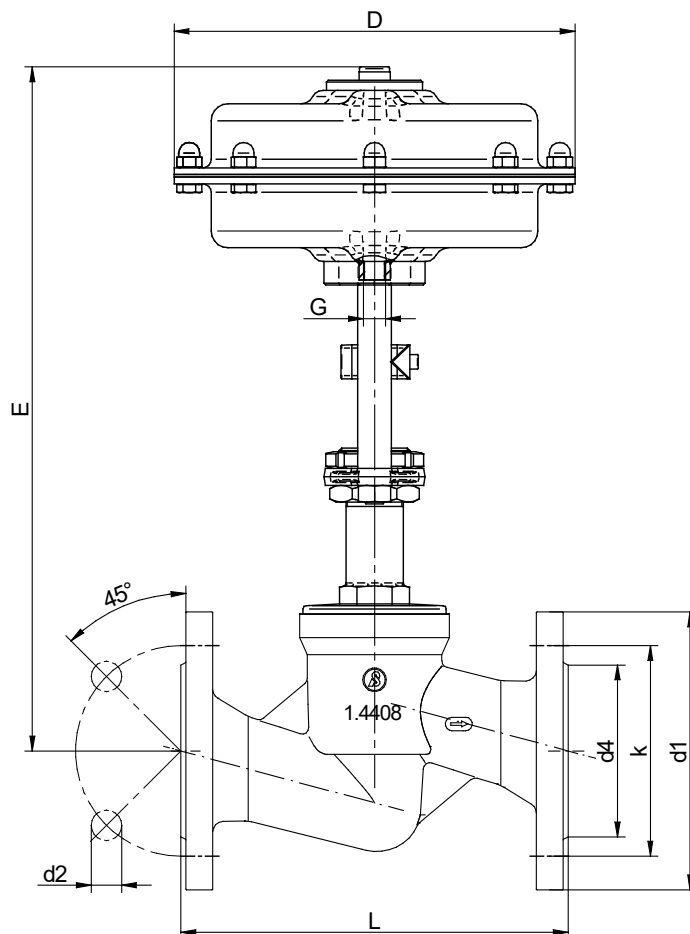
flange #ANSI 150 face to face dimensions acc. ANSI/ISA-75.08.01

DN	Antrieb	L	D	d	d1	d2	k	E	G	Hub	I	Kvs-Werte	Gewicht (kg)
15	50	184	62	88,9	35,1	15,7	60,5	169	1/8"	12	34,5	3,1	2,5
20	50	184	62	98,6	42,9	15,7	69,9	174	1/8"	15,5	34,5	6,5	3,3
25	50	184	62	108	50,8	15,7	79,2	191	1/8"	15,5	34,5	12	3,9
25	80	184	98	108	50,8	15,7	79,2	228	1/4"	20	55	12	5,5
32	50	200	62	117,3	63,5	15,7	88,9	195	1/8"	15,5	34,5	17	5,5
32	80	200	98	117,3	63,5	15,7	88,9	232	1/4"	23	55	17,5	7
32	125	200	144	117,3	63,5	15,7	88,9	258	1/4"	23	80	17,5	9,2
40	50	222	62	127	73,2	15,7	98,6	201	1/8"	15,5	34,5	25	6,6
40	80	222	98	127	73,2	15,7	98,6	239	1/4"	28,5	55	25	8,1
40	125	222	144	127	73,2	15,7	98,6	264	1/4"	28,5	80	25	10,3
Reinforced design													
40	50	222	62	127	73,2	15,7	98,6	216	1/8"	15,5	34,5	25	7,4
40	80	222	98	127	73,2	15,7	98,6	254	1/4"	28,5	55	25	8,9
40	125	222	144	127	73,2	15,7	98,6	279	1/4"	28,5	80	25	11,1
50	80	254	98	152,4	91,9	19,1	120,7	278	1/4"	30	55	40	10,1
50	125	254	144	152,4	91,9	19,1	120,7	303	1/4"	30	80	40	12,3

Flanged Valve HT220 7032

with diaphragm actuator

Dimensions and Weights



DIN-flange

DN	Actuator	L	d1	d2	d4	k	D	E	G	Stroke	Kvs-value	Weight (kg)
40	250	200	150	18	88	110	238	411	G1/4"	25	25	17,8
50	250	230	165	18	102	125	238	407	G1/4"	25	40	20

Flange #ANSI 150 face to face dimension acc. ANSI/ISA-75.08.01

DN	Actuator	L	d1	d2	d4	k	D	E	G	Stroke	Kvs-value	Weight (kg)
40	250	222	127	15,7	73,2	98,6	238	411	G 1/4"	25	25	17,8
50	250	254	152,4	19,1	91,9	102,7	238	407	G 1/4"	25	40	20

Text and pictures are not binding. We reserve the right, to alter the equipment.