

# Angle Seat Manual Valve 7011



1/2" up to 2"

580 psi

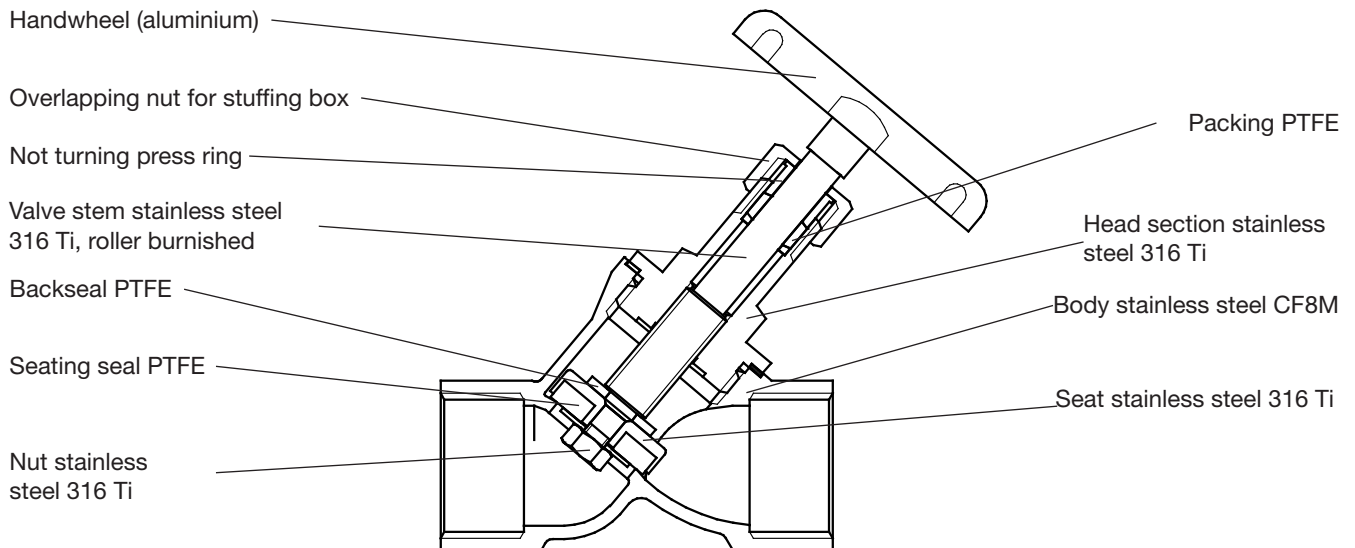
Manually operated valve for neutral up to highly aggressive media.

- Compact design
- Working pressure up to 580 psi
- All parts contacting the fluid made from stainless steel
- Backsealing to unburden the stuffing box when the valve is opened
- For temperatures from -22°F up to +392°F

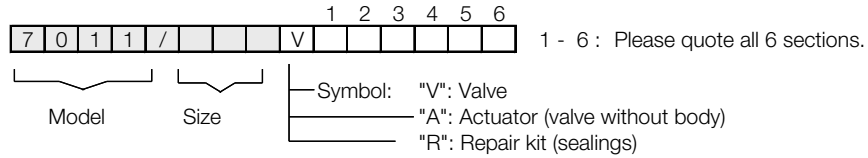


## Technical Information

|                     |   |               |
|---------------------|---|---------------|
| Orifice sizes       | 1/2" - 2"   |               |
| Connections         | ISO thread  | G 1/2" - G 2" |
|                     | NPT thread  | 1/2" - 2"     |
|                     | Tri clamp   | 1/2" - 2"     |
|                     | others upon request   |               |
| Body material       | Stainless steel CF8M  |               |
| Nominal pressure    | 580 psi   |               |
| pressure limitation | limitation for dangerous gases acc. Pressure equipment directive 2014/68/EU (category I):<br>PS (psi) x DN (inch) / 1.75 < 1000 |               |
| Fluid temperature   | -22°F up to +392°F  |               |
| ambient temperature | -4°F up to +212°F (special versions from -58°F up to +212°F)  |               |



## Ordering Number System

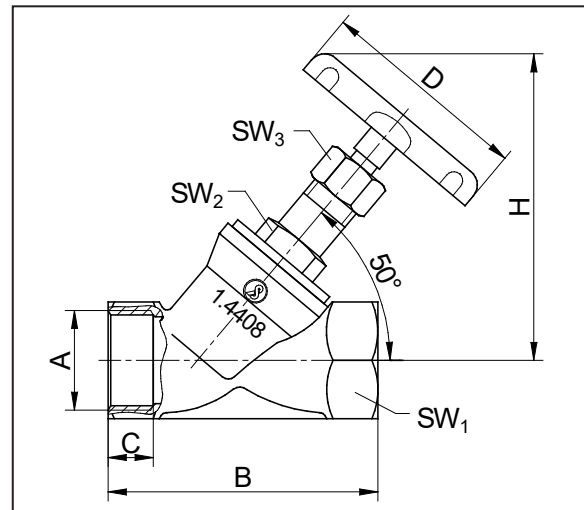
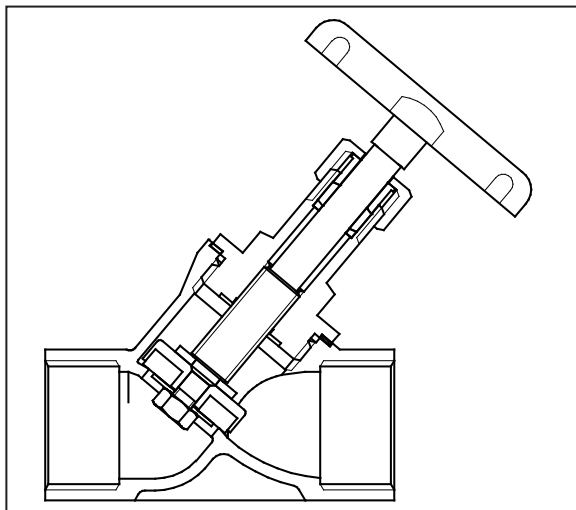


| 1. Body type | 2. Connection   | 3. Body material          | 4. Seating seal                         | 5. Pilot function | 6. Actuator         |
|--------------|---|---------------------------|---|-------------------|---------------------|
| 1 Angle body | H Welding ends acc. ISO<br>5 NPT-thread<br>Z Tri-clamp<br>* others upon request | 2 Stainless steel<br>CF8M | 0 PTFE<br>1 Viton<br>2 EPDM<br>3 BUNA-N | - Without         | 5 Manually operated |

| 7. Hand weel                        | 8. Head section material | 9. Packing | 10. Temperature version | 11. Accessories  | 12. Special versions |
|-------------------------------------|--------------------------|------------|-------------------------|------------------|----------------------|
| - Standard<br>1 stainless steel 304 | - Standard               | - Standard | - Standard              | - No accessories | S Special versions   |

Ordering example: 7011/015V1520 - 5  
 Nominal size 1/2", angle body valve, NPT-thread, stainless steel body, seat material PTFE, manual operation.

## Dimensions and Weights

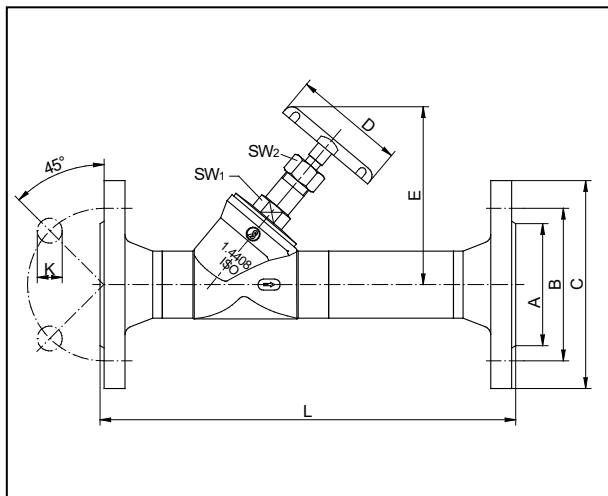


| A<br>G/NPT<br>(Size) | B    | C    | D    | E      |        | SW1  | SW2  | SW3  | Cvs-<br>Wert | Weight<br>(lbs) |
|----------------------|------|------|------|--------|--------|------|------|------|--------------|-----------------|
|                      |      |      |      | opened | closed |      |      |      |              |                 |
| 1/2"                 | 2.56 | 0.47 | 2.36 | 3.15   | 2.87   | 0.98 | 0.87 | 0.79 | 4.5          | 0.42            |
| 3/4"                 | 2.95 | 0.51 | 2.76 | 3.78   | 3.39   | 1.22 | 0.87 | 0.79 | 11.1         | 0.59            |
| 1"                   | 3.54 | 0.59 | 2.76 | 4.33   | 3.78   | 1.54 | 1.18 | 0.79 | 19.7         | 1.01            |
| 1 1/4"               | 4.33 | 0.67 | 3.15 | 5.2    | 4.57   | 1.89 | 1.18 | 0.94 | 32.5         | 1.69            |
| 1 1/2"               | 4.72 | 0.75 | 3.15 | 5.55   | 4.8    | 2.17 | 1.18 | 0.94 | 45.2         | 2.55            |
| 2"                   | 5.91 | 0.83 | 3.94 | 6.65   | 5.67   | 2.68 | 1.18 | 1.06 | 71.9         | 3.78            |

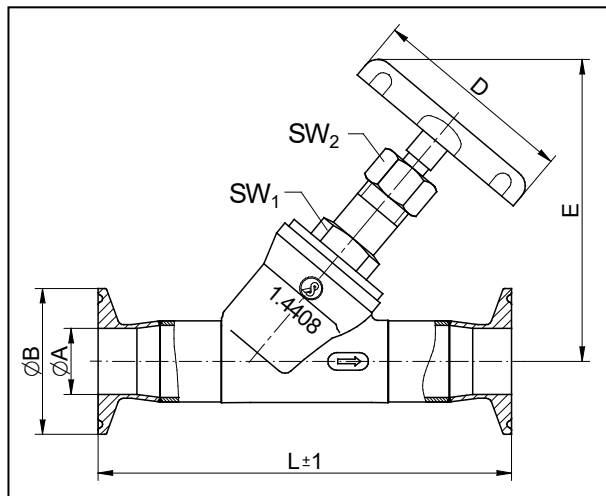
Dimensions in inch

## Dimensions and weights with weld neck flanges or Tri-Clamp connection

weld neck flange DIN/ANSI



Tri-Clamp connection (Inch)



| DN     | weld neck flange<br>acc. to DIN 2635 |     |     |      | weld neck flange<br>acc. to ANSI 150 |     |     |      | clamp socket<br>(Inch) |     |     | D   | E    |        | SW1 | SW2 | Cvs-<br>Value | Weight<br>(ca. lbs) |
|--------|--------------------------------------|-----|-----|------|--------------------------------------|-----|-----|------|------------------------|-----|-----|-----|------|--------|-----|-----|---------------|---------------------|
|        | A                                    | B   | C   | L    | A                                    | B   | C   | L    | A                      | B   | L   |     | open | closed |     |     |               |                     |
| 1/2"   | 1.8                                  | 2.6 | 3.7 | 9.1  | 1.4                                  | 2.4 | 3.5 | 9.1  | 0.4                    | 1   | 4.7 | 2.4 | 3.1  | 2.9    | 0.9 | 0.7 | 4.5           | 0.4                 |
| 3/4"   | 2.3                                  | 3   | 4.1 | 10.2 | 1.7                                  | 2.7 | 3.9 | 10.2 | 0.6                    | 1   | 5.1 | 2.8 | 3.8  | 3.4    | 0.9 | 0.7 | 11.1          | 0.6                 |
| 1"     | 2.7                                  | 3.3 | 4.5 | 10.2 | 2                                    | 3.1 | 4.3 | 10.2 | 0.9                    | 2   | 5.6 | 2.8 | 4.3  | 3.8    | 1.2 | 0.7 | 19.7          | 1                   |
| 1 1/4" | 3.1                                  | 3.9 | 5.5 | 11.8 | 2.5                                  | 3.5 | 4.6 | 11.8 | 1.3                    | 2   | 6.5 | 3.1 | 5.2  | 4.6    | 1.2 | 0.9 | 32.4          | 1.7                 |
| 1 1/2" | 3.5                                  | 4.3 | 5.9 | 11.8 | 2.9                                  | 3.9 | 5   | 11.8 | 1.4                    | 2   | 6.4 | 3.1 | 5.6  | 4.8    | 1.2 | 0.9 | 45.1          | 2.6                 |
| 2"     | 4                                    | 4.9 | 6.5 | 13.8 | 3.6                                  | 4.8 | 6   | 13.8 | 1.9                    | 2.5 | 7.6 | 3.9 | 6.7  | 5.7    | 1.2 | 1.1 | 71.7          | 3.8                 |

Dimensions in inch