

Check Valve 4000

DN 10 up to DN 80

Non-return valve for backflow prevention

- All parts in contact with process medium made from stainless steel
- Compact design
- Sealing material PTFE

Technical Information

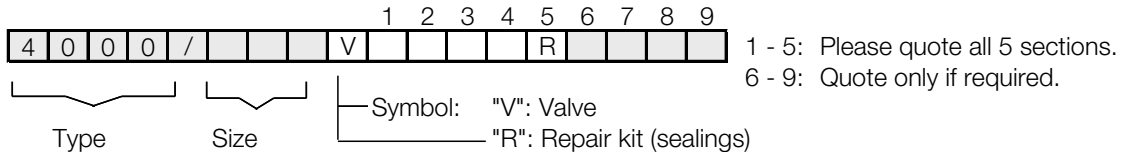
Nominal sizes	angle seat body rectangular body flange body	DN10 - DN80 DN15 - DN50 DN15 - DN80
Body material	stainless steel 1.4408	
Material inner parts	stainless steel 1.4571/1.4310	
Material seating seal	PTFE (EPDM, NBR, FKM, PEEK)	
Connections	pipe thread acc. ISO 228-1 NPT-thread welding ends tri-clamp flanges acc. DIN EN 1092-1 flanges acc. ANSI 150	
Pressure class	PN 40	
Cracking/lifting pressure	ca. 0,2 bar (ca. 0,1bar with reduced spring tension)	
pressure limitation	limitation for dangerous gases acc. Pressure equip- ment directive 97/23/EG (category I): PS x DN < 1000	
Temperature range	-40°C up to +200°C	



Differential Pressure

Nominal size DN	adm. differential pressure (backpressure) bar seating seal	
	PTFE/PEEK	FKM / EPDM / NBR
10	40	16
15	40	16
20	40	16
25	40	16
32	40	16
40	40	16
50	25	16
65	25	16
80	25	16

Ordering Number System

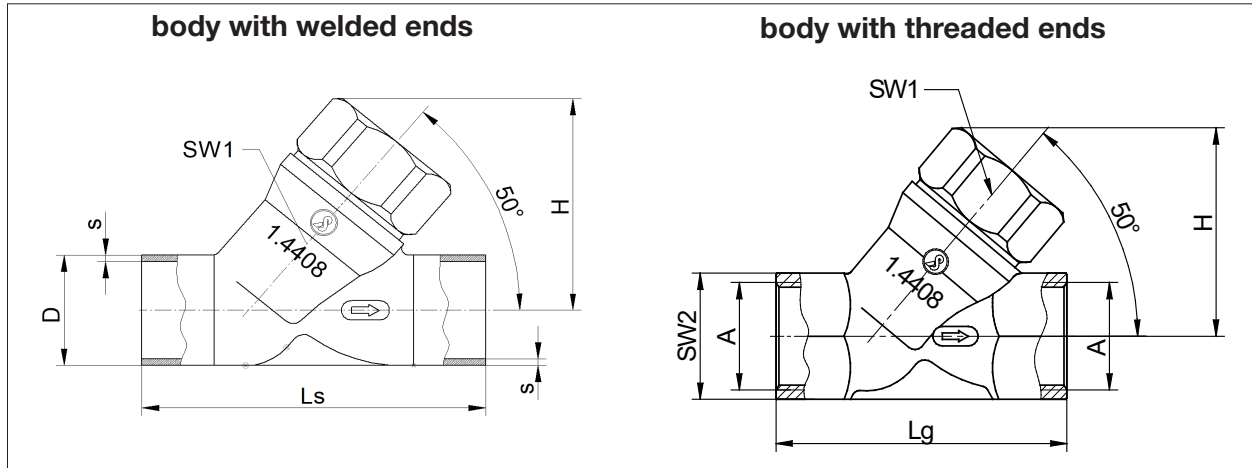


1. Body type	2. Connection	3. Body material	4. Seating seal	5. Pilot function	6. Springs	7. Body	8. Upper part	9. Special versions
1 angled body	0 BSP thread	2 stainless steel	- without	R check valve (please quote)	- standard	- standard	- standard	S special versions
2 flanged body	2 without thread with welding ends (socket weld connection)		0 PTFE		0 reduced spring resistance			
3 flange valve ANSI 150	5 NPT-thread		1 FKM (Viton)		B without spring			
7 angle valve PN40	6 without thread		2 EPDM					
9 flange valve PN40	9 angle seat valve acc. DIN EN 1092-1		3 NBR					
	C angle seat valve acc. ANSI 150		5 PTFE with 25% glass fibre					
	D with welding ends acc. DIN 11850		8 PEEK for applications above 160°C					
	E with welding ends		9 EPDM (FDA)					
	H with welding ends acc. ISO							
	T tapered pipe thread acc. EN 10226-2							
	Z Tri-Clamp connection (inch)							

Ordering example: 4000/020V1020R
check valve with angle body, nominal size DN20, whitworth thread, stainless steel body, PTFE seat material, check valve

Dimensions and weights

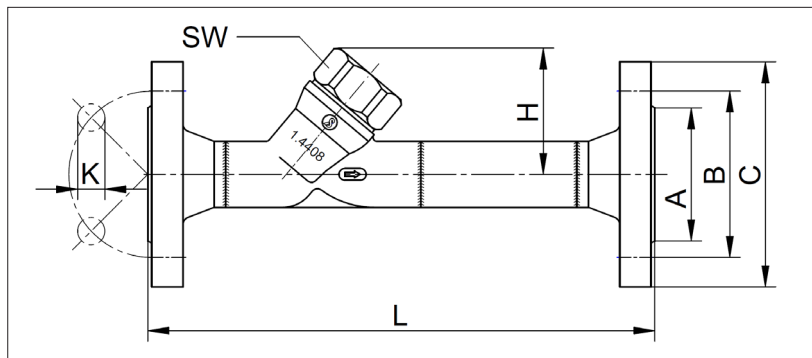
Angle seat body



DN	with welding ends acc. ISO			with G-thread			H	SW1	Kvs-Value	Weight [kg]
	D	s	Ls	A	SW2	Lg				
10	-	-	-	3/8"	23	60	43,5	27	1,0	0,25
15	21,3	2	80	1/2"	25	65	42,8	27	2,6	0,25
20	26,9	2,3	90	3/4"	31	75	54	32	6	0,42
25	33,7	2,6	100	1"	39	90	62,9	36	11,5	0,65
32	42,6	2,6	110	1 1/4"	48	110	74	36	18,5	1,1
40	48,3	2,6	120	1 1/2"	55	120	79,5	27	28	1,05
50	60,3	2,9	150	2"	68	150	96	36	41	2,2
65	76,1	2,9	180	2 1/2"	85	180	123,1	36	75	4
80	88,9	3,2	220	3"	100	214	152,2	41	120	7

Dimensions in mm

Angle seat flange body

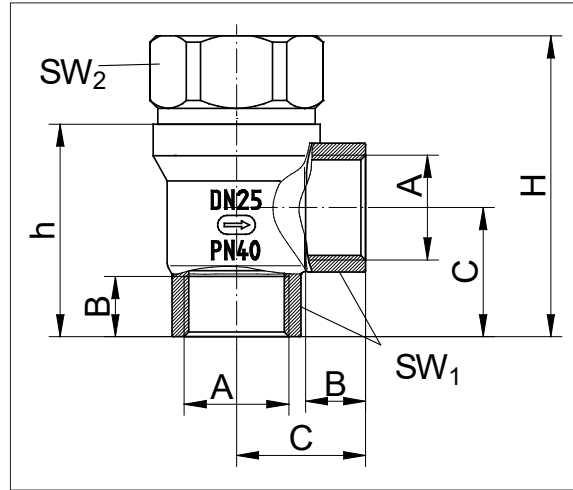


DN	PN40 (DN65 and DN80 PN16)					ANSI 150					H	L	Weight [kg]
	A	B	C	N (Number of holes)	K	A	B	C	N (Number of holes)	K			
15	45	65	95	4	14	34,9	60,3	90	4	15,75	43	230	1,8
20	58	75	105	4	14	42,9	69,9	100	4	15,75	54	260	2,9
25	68	85	115	4	14	50,8	79,4	110	4	15,75	65	260	3,4
32	78	100	140	4	18	63,5	88,9	115	4	15,75	79	300	5,2
40	88	110	150	4	18	73	98,4	125	4	15,75	90	300	5,7
50	102	125	165	4	18	92,1	120,7	150	4	19,05	97	350	8,8
65	122	145	185	8	18	104,8	139,7	180	4	19,05	123	400	11,6
80	138	160	200	8	18	127	152,4	190	4	19,05	152	450	14,9

Dimensions in mm

Dimensions and weights

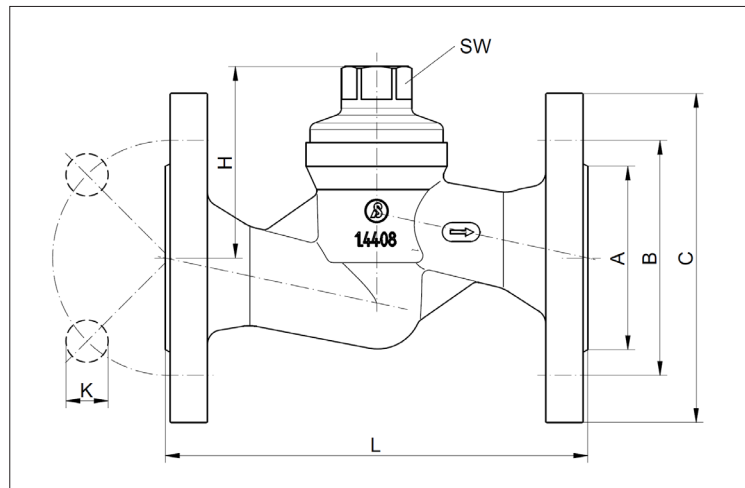
Rectangular body



DN	with G-thread		with NPT-thread		C	SW1	SW2	h	H	Weight [kg]
	A	B	A	B						
15	G 1/2"	15	NPT 1/2"	14,5	41	25	32	64	75	1,3
20	G 3/4"	16,3	NPT 3/4"	15	41	32	36	66	88,5	1,7
25	G 1"	19,1	NPT 1"	17,9	41	41	36	67,5	95,5	2,0
32	G 1 1/4"	21,4	NPT 1 1/4"	18,4	65	50	27	93	125,5	2,2
40	G 1 1/2"	21,4	NPT 1 1/2"	18,4	65	55	36	101	140	3,4
50	G 2"	25,7	NPT 2"	18,4	65	68	36	116	166,5	5,3

Dimensions in mm

Flanged body



DN	Flanges acc. EN 1092-1; Face to face dimension acc. EN 558-1						Flanges acc. ASME B16.5; Face to face dimension acc. ANSI/ISA-75.08.01						H	SW	Weight [kg]
	L	C	B	A	N (Number of holes)	K	L	C	B	A	N (Number of holes)	K			
15	130	95	65	45	4	14	184	35,1	60,5	88,9	4	15,7	44	32	3,8
20	150	105	75	58	4	14	184	42,9	69,9	98,6	4	15,7	61	36	3,8
25	160	115	85	68	4	14	184	50,8	79,2	108	4	15,7	72	36	4,4
32	180	140	100	78	4	18	200	63,5	88,9	117,3	4	15,7	82	27	6,1
40	200	150	110	88	4	18	222	73,2	98,6	127	4	15,7	99	36	8,1
50	230	165	125	102	4	18	254	91,9	120,7	152,4	4	19,1	131	36	11,6
65	290	122	145	122	8	18	-	-	-	-	-	-	142	-	20,0
80	310	138	160	138	8	18	-	-	-	-	-	-	178	-	26,3

Dimensions in mm

Text and pictures are not binding. We reserve the right, to alter the equipment.